


# Assessing the Validity of a New Prediction Model for Patient Satisfaction After Total Knee Arthroplasty: A Retrospective Cross-Sectional Study

This article was published in the following Dove Press journal:  
*Orthopedic Research and Reviews*

Junya Itou   
Masafumi Itoh  
Umuto Kuwashima  
Ken Okazaki

Department of Orthopaedic Surgery,  
Tokyo Women's Medical University,  
Tokyo, Shinjuku-ku 162-8666, Japan

**Purpose:** Previously, a simplified model using statistically selected questionnaires from various patients reported outcome measures (PROMs) was proposed to predict patient satisfaction after total knee arthroplasty (TKA). However, this simple and useful model needs to be validated across ethnic and cultural differences. The objective of this study was to evaluate the utility of this predictive model in Japanese patients.

**Patients and Methods:** Of all knees treated using primary TKA at our institution between August 2017 and June 2018, this study involved 50 knees of 48 patients (11 men, 37 women) to whom the predictive model was applied preoperatively and from whom PROMs were obtained at least 1 year postoperatively. To evaluate PROMs, patients completed the KSS and the Forgotten Joint Score-12. Correlations were analyzed between preoperatively predicted postoperative patient satisfaction and actual postoperative patient satisfaction, as well as each PROM.

**Results:** KSS satisfaction improved from  $15.6 \pm 6.1$  preoperatively to  $27.8 \pm 8.3$  postoperatively, with satisfaction reported for 41 knees (82%). The preoperatively predicted postoperative patient satisfaction score was  $26.3 \pm 4.6$ , with no significant correlation with actual postoperative score ( $r = 0.05$ ,  $p = 0.72$ ). The difference between preoperatively predicted patient satisfaction and actual postoperative patient satisfaction was positively correlated with the score for question 9 of the Pain Catastrophizing Scale, among other instruments constituting the predictive model.

**Conclusion:** Our data suggest that the predictive model had a low predictive value and that it had limited applicability to Japanese patients. The results also suggest that a tendency toward catastrophic thinking is associated with discrepancy between preoperatively predicted postoperative patient satisfaction and actual postoperative patient satisfaction. The predictive model has low utility and needs some modification.

**Keywords:** total knee arthroplasty, satisfaction, prediction

Correspondence: Ken Okazaki  
Department of Orthopaedic Surgery,  
Tokyo Women's Medical University, 8-1  
Kawada-Cho, Tokyo, Shinjuku-ku 162-  
8666, Japan  
Tel +81-3-3353-8111  
Fax +81-3-5269-7618  
Email okazaki.ken@twmu.ac.jp

## Introduction

Total knee arthroplasty (TKA) is a widely accepted surgical technique that is effective for relieving pain and achieving functional improvement.<sup>1,2</sup> Patient-reported outcome measures (PROMs) are increasingly used for pre- and postoperative evaluation, including pain relief, functional outcome, and satisfaction.<sup>3</sup> The 2011 Knee Society Score (KSS) is also used as a measure of patient satisfaction

after TKA. Vigorous debate has surrounded patient satisfaction and the 2011 KSS has been recognized as an important tool for assessing patient satisfaction after TKA.<sup>4-8</sup> Various factors have been shown to affect postoperative patient satisfaction but it remains difficult to identify preoperatively those patients likely to report high postoperative satisfaction.<sup>9,10</sup> Van Onsem et al recently proposed and demonstrated the utility of a simple model for predicting postoperative satisfaction.<sup>11</sup> This model comprises a combination of selected items from several PROMs that have been statistically identified as useful for predicting postoperative patient satisfaction score of 2011 KSS: PROMs used in this prediction model include Knee injury and Osteoarthritis Outcome Score (KOOS), EuroQol 5 Dimension, and Pain Catastrophizing Scale (PCS). This prediction model comprises 10 factors including sex, age, 2 items from EQ-5D, 3 items from KOOS, 2 items from PCS and 1 item from KSS.

Preoperatively predicting postoperative patient satisfaction using this simple model would be helpful for patient selection and education and would ultimately contribute to improved overall patient satisfaction after TKA. However, ethnic and cultural differences may affect the ability to predict patient satisfaction. Therefore, the prediction model should be validated across many countries. The objective of this study was to evaluate the validity and utility of the predictive model in Japanese patients. Our hypothesis was that postoperative patient satisfaction predicted by the model would correlate well with actual postoperative patient satisfaction, thus, demonstrating the potential of this model as a helpful tool for preoperative patient education and selection.

## Patients and Methods

Of all knees treated with primary TKA at our institution which was tertiary medical care center between August 2017 and June 2018, this study involved 50 knees of 48 patients (11 men, 37 women) to whom the predictive model was applied preoperatively and from whom PROMs were obtained at least 1 year postoperatively. Mean age at surgery was  $74.6 \pm 7.6$  years. Of the 50 knees, 46 had primary knee osteoarthritis (all of them were Kellgren-Lawrence classification grade 3 or 4) and 4 had rheumatoid arthritis; 44, 4, and 2 were treated using the bicruciate stabilized, posterior stabilized, and mobile cruciate substituting designs, respectively. Surgeries were performed by two experienced surgeons using a tourniquet via a subvastus approach with a gap-balancing technique to achieve neutral mechanical

alignment. Postoperative drainage was not used in all cases. Patients were allowed to ambulate with full weight bearing as pain permitted from the day after surgery and underwent rehabilitation without restriction to their range of motion.

To evaluate PROMs, patients were asked by the attending surgeon to complete the KSS and the Forgotten Joint Score-12 (FJS-12). For patients who underwent bilateral TKA, PROMs were assessed for each knee. Preoperative PROMs and predictive model questions were assessed at the same time and postoperative PROMs were assessed at the 1-year postoperative visit.

This simple useful model comprising a small number of items is expressed as follows:

Predictive model =  $26.10 + 2.3 \times \text{gender (Female 0, Male 1)} + 0.13 \times \text{age} + 1.59 \times \text{Q3 (EQ-5L: pain)} - 1.40 \times \text{Q4 (KOOS S6)} - 1.08 \times \text{Q5 (KOOS S2)} + 0.75 \times \text{Q6 (KSS I-3)} - 1 \times \text{Q7 (KOOS Q1)} - 1.12 \times \text{Q8 (EQ-5L: anxiety)} - 0.88 \times \text{Q9 (PCS Q9)} - 1.10 \times \text{Q10 (PCS Q13)}$

Q3 (EQ-5L:pain): I have no pain or discomfort = 1 point, I have slight pain or discomfort = 2 points, I have moderate pain or discomfort = 3 points, I have severe pain or discomfort = 4 points, I have extreme pain or discomfort = 5 points.

Q4 (KOOS S6): During the last week, how severe was your knee joint stiffness after first wakening in the morning? None = 0 points, mild = 1 point, moderate = 2 points, severe = 3 points, extreme = 4 points.

Q5 (KOOS S2): During the last week, did you feel grinding, hear clicking or any other type of noise when your knee moves? Never = 0 points, rarely = 1 point, sometimes = 2 points, often = 3 points, always = 4 points.

Q6 (KSS I-3): Does your knee feel "normal" to you? Never = 0 points, sometimes = 3 points, always = 5 points.

Q7 (KOOS Q1): How often are you aware of your knee problem? Never = 0 points, monthly = 1 point, weekly = 2 points, daily = 3 points, constantly = 4 points.

Q8 (EQ-5L: anxiety): I am not anxious or depressed = 1 point, I am slightly anxious or depressed = 2 points, I am moderately anxious or depressed = 3 points, I am severely anxious or depressed = 4 points, I am extremely anxious or depressed = 5 points.

Q9 (PCS Q9): When I am in pain I cannot seem to keep it out of my mind. Not at all = 0 points, to a slight degree = 1 point, to a moderate degree = 2 points, to a great degree = 3 points, all the time = 4 points.

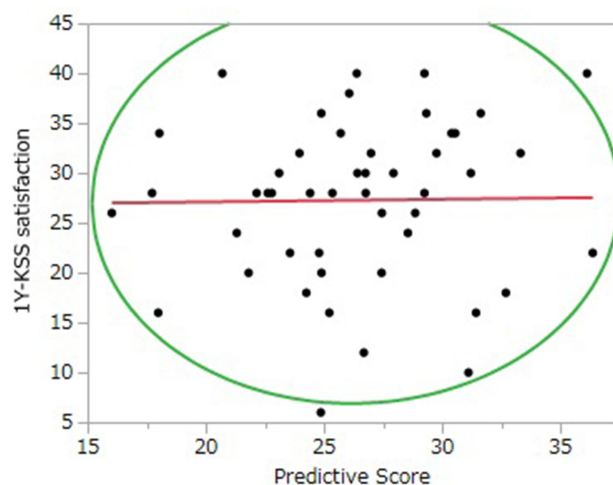
Q10 (PCS Q13): When I am in pain I wonder whether something serious may happen. Not at all = 0 points, to a slight degree = 1 point, to a moderate degree = 2 points, to a great degree = 3 points, all the time = 4 points.

Correlations were analyzed between preoperatively predicted postoperative patient satisfaction and actual postoperative patient satisfaction and for each PROM. KSS scores  $\geq 20$  (out of 40) were considered indicative of satisfaction and scores of  $< 20$  dissatisfaction. For statistical analysis, Bland-Altman analysis was used for errors between two groups, and Spearman's rank correlation coefficient was used for correlations between preoperatively predicted postoperative patient satisfaction and actual postoperative patient satisfaction, differences in preoperatively predictive and actual postoperative patient satisfaction ( $\Delta$ satisfaction) and each PROM. All analyses were performed using JMP software (SAS, Cary, NC), with a significance level of  $p = 0.05$ . Statistical power analysis determined that 34 knees were necessary to certify a correlation of 0.25 with 80% power and an alpha of 0.05.

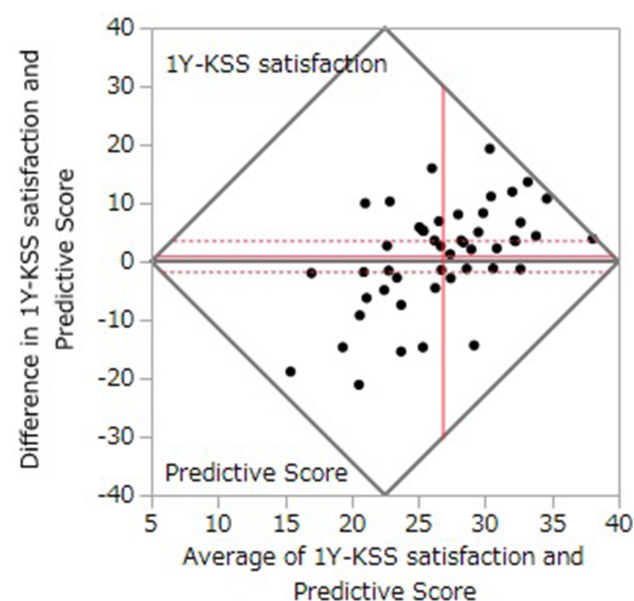
This study was a retrospective cross-sectional study and was conducted with approval by the ethics committee of our institution (Tokyo Women's Medical University-4952). All procedures performed in this study involving human participants were in accordance with the 1964 Helsinki declaration. Informed consent for the study was obtained from all patients preoperatively.

## Results

The results of pre- and postoperative PROMs and satisfaction prediction are shown in Table 1. KSS satisfaction improved from  $15.6 \pm 6.1$  preoperatively to  $27.8 \pm 8.3$  postoperatively, with satisfaction reported for 41 knees (82%). The preoperatively predicted patient satisfaction score was  $26.3 \pm 4.6$ , with no significant correlation observed with actual postoperative patient satisfaction ( $r = 0.05$ ,  $p = 0.72$ ; Figure 1). Bland-Altman analysis showed no clear systematic error between preoperatively predicted and actual postoperative patient satisfaction (Figure 2).  $\Delta$ satisfaction showed a moderate positive correlation with the score for question 9 of the PCS (PCS Q9,



**Figure 1** One-year KSS satisfaction compared with the predicted score ( $r=0.01$ ,  $p=0.92$ ).



**Figure 2** Bland-Altman analysis.

**Table 1** Pre- and Postoperative Patient-Reported Outcome Measures and Predictive Satisfaction Score

	Pre-TKA	Post-TKA
KSS satisfaction	$15.6 \pm 6.1$	$27.8 \pm 8.3$
KSS total	$82.7 \pm 21.2$	$123.1 \pm 32.3$
FJS-12	$20.8 \pm 13.0$	$48.7 \pm 24.5$
Predictive score	-	$26.3 \pm 4.6$

**Abbreviations:** FJS-12, Forgotten Joint Score-12; KSS, Knee Society Score; TKA, Total Knee Arthroplasty; FJS-12, Forgotten Joint Score-12; KSS, Knee Society Score; PCS, Pain Catastrophizing Score; PROMs, patient-reported outcome measures; TKA, total knee arthroplasty.

“When I’m in pain I can’t seem to keep it out of my mind”), which is included in the predictive formula ( $r = 0.57$ ,  $p < 0.0001$ ). Multivariate analysis showed that PCS Q9 was also moderately correlated with the pre- and postoperative difference in KSS pain ( $\Delta$ KSS pain = preoperative pain score – postoperative pain score) ( $r = -0.49$ ,  $p = 0.0004$ ).

## Discussion

The most important finding from this study is the difficulty in predicting postoperative patient satisfaction using the previously reported predictive model. The results lead us to reject our hypothesis and suggest the difficulty of

preoperatively identifying patients likely to report high postoperative satisfaction based on the predictive score.

Predicting postoperative satisfaction is increasingly important for successful surgical intervention.<sup>12</sup> Various factors have been reported to influence postoperative satisfaction. Bourne et al have identified the following factors as being associated with low postoperative satisfaction: disappointing results, low Western Ontario and McMaster Universities Osteoarthritis Index (WOMAC) scores, preoperative pain at rest, and postoperative complications requiring readmission.<sup>6</sup> Kwon et al have reported that of all scores in the WOMAC, the function score was the most closely correlated with postoperative patient satisfaction.<sup>7</sup> Aside from PROMs, Matsuda et al reported that advanced age and varus alignment also correlate with postoperative patient satisfaction.<sup>8</sup> Several attempts have been made to identify preoperative patient factors associated with high postoperative satisfaction but without success.<sup>1,9</sup> In such circumstances, Van Onsem et al developed a simple predictive model.<sup>12</sup> This model consists of only eight questions, except for basic information such as age and gender, and was considered a highly useful preoperative tool for predicting postoperative satisfaction. In their study, severity of OA on preoperative AP standing radiographs was not related to the postoperative satisfaction. However, a supplementary study conducted by Calkins et al in the United States showed that the predictive value of this model was low because it may produce inconsistent results depending on patients' nationality and cultural background.<sup>13</sup> Our data also suggest the low predictive value of the model and its limited applicability to Japanese patients. With regard to the validity of the KSS, Nobel et al<sup>14</sup> stated that the KSS needs to be validated in other countries in addition to the US and Canada. Similarly, evaluating the validity of the predictive score in each region or country is considered to be important.

In this study, there was no significant correlation between preoperatively predicted and actual postoperative patient satisfaction and Bland-Altman analysis showed only random error, but no clear systematic error. To decrease the impact of these random errors, a larger sample size is required. Further studies may nevertheless interpret the utility of the predictive formula differently.

To determine the cause of the discrepancy between preoperatively predicted and actual postoperative patient satisfaction, we investigated the association of  $\Delta$ satisfaction with preoperative PROMs. The results suggest an association between a tendency toward catastrophic thinking and a discrepancy between preoperatively predicted and actual

postoperative patient satisfaction. PCS score is generally understood to correlate with postoperative pain.<sup>15</sup> Bierke et al demonstrated a correlation between PCS score and poor patient satisfaction after TKA.<sup>16</sup> Our data showed a positive and moderate correlation between the PCS Q9 score and  $\Delta$ satisfaction. Among the PCS questions, this question is originally intended to assess "rumination," which represents the tendency to think repetitively about pain.<sup>17</sup> Higher scores for the question appear to reflect higher satisfaction in patients who had undergone TKA that was effective in relieving pain. In fact, patients with higher PCS Q9 scores also showed greater improvement in KSS pain. In other words, "better than expected" outcomes experienced by patients might affect their way of thinking about pain. Recent evidence suggests an association between central sensitization and postoperative pain after TKA.<sup>18</sup> Further studies are required to investigate how central sensitization affects postoperative pain and satisfaction using such measures as the Central Sensitization Inventory score.<sup>19</sup>

We had enrolled 48 patients and among them, 4 people had rheumatoid arthritis. No difference was observed regarding the percentage in the original study by Van Onsem et al.<sup>11</sup> They had enrolled 113 patients and among them, 4% of patients had rheumatoid arthritis. Therefore, we think it is proper to combine rheumatoid arthritis patients with this study. The current study did not take into account comorbidities in extremities, such as hip arthritis, trauma and fractures. Those comorbidities may affect the postoperative satisfaction. However, the original study by Van Onsem et al<sup>11</sup> did not include the status of those comorbidities in their prediction model. This might be another reason of that the validity of this model was not proved by other studies including us.

This study has a few limitations. First, satisfaction was not assessed at 3 months postoperatively, which was the original assessment time point for the predictive score. Instead, we assessed satisfaction at 1 year postoperatively. However, Calkin et al<sup>10</sup> assessed scores at 3 months and 1 year postoperatively and found no difference. Furthermore, van Onsem et al originally stated in their report that 3 months postoperatively is a premature time for surveillance because it is a rehabilitation period and the patient is still recovering. They mentioned that the predictive score could be a good indicator of satisfaction at 1 year postoperatively. Second, a small sample size was used. However, postoperative patient satisfaction was similar to that reported previously, suggesting that the cohorts were similar. Third, predictive scores could not be collected from all patients undergoing primary TKA, which possibly resulted in selection bias. However, results



from a cross-sectional study would not likely be affected by missing samples.

## Conclusion

We found that Van Onsem et al's predictive model for postoperative patient satisfaction was of limited utility in a cohort of Japanese patients. The model may need some modifications taking into account the possible effects of ethnic and cultural differences.

## Acknowledgment

We thank ThinkSCIENCE for English language editing.

## Disclosure

Ken Okazaki reports personal fees from Smith & Nephew, Zimmer Biomet, and Olympus Terumo Biomaterials. The authors report no other potential conflicts of interest in this work.

## References

1. Forsythes ME, Dunbar MJ, Hennigar AW, et al. Prospective relation between catastrophizing and residual pain following knee arthroplasty: two-year follow-up. *Pain Res Manag.* 2008;13(4):335–341. doi:10.1155/2008/730951
2. Lewis GN, Rice DA, McNair PJ, et al. Predictors of persistent pain after total knee arthroplasty: a systematic review and meta-analysis. *Br J Anaesth.* 2014;114(4):551–561. doi:10.1093/bja/aeu441
3. Kuroda Y, Matsumoto T, Takayama K, et al. Subjective evaluation before and after total knee arthroplasty using the 2011 Knee Society Score. *Knee.* 2016;23(6):964–967. doi:10.1016/j.knee.2016.06.008
4. Baumann C, Rat AC, Mainard D, et al. Importance of patient satisfaction with care in predicting osteoarthritis-specific health-related quality of life one year after total joint arthroplasty. *Qual Life Res.* 2011;20(10):1581–1588. doi:10.1007/s11136-011-9913-8
5. Becker R, Doring C, Denecke A, et al. Expectation, satisfaction and clinical outcome of patients after total knee arthroplasty. *Knee Surg Sports Traumatol Arthrosc.* 2011;19(9):1433–1441. doi:10.1007/s00167-011-1621-y
6. Bourne RB, Chesworth BM, Davis AM, et al. Patient satisfaction after total knee arthroplasty: who is satisfied and who is not? *Clin Orthop Relat Res.* 2010;468(1):57–63. doi:10.1007/s11999-009-1119-9
7. Kwon SK, Kang YG, Kim SJ, et al. Correlations between commonly used clinical outcome scales and patient satisfaction after total knee arthroplasty. *J Arthroplasty.* 2010;25(7):1125–1130. doi:10.1016/j.arth.2009.10.015
8. Matsuda S, Kawahara S, Okazaki K, et al. Postoperative alignment and ROM affect patient satisfaction after TKA. *Clin Orthop Relat Res.* 2013;471(1):127–133. doi:10.1007/s11999-012-2533-y
9. Judge A, Arden NK, Price A, et al. Assessing patients for joint replacement: can pre-operative Oxford hip and knee scores be used to predict patient satisfaction following joint replacement surgery and to guide patient selection? *J Bone Joint Surg Br.* 2011;93(12):1660–1664. doi:10.1302/0301-620X.93B12.27046
10. McGuigan FX, Hozack WJ, Moriarty L, et al. Predicting quality-of-life outcomes following total joint arthroplasty. Limitations of the SF-36 Health Status Questionnaire. *J Arthroplasty.* 1995;10(6):742–747. doi:10.1016/S0883-5403(05)80069-5
11. Van Onsem S, Van Der Straeten C, Arnout N, et al. A new prediction model for patient satisfaction after total knee arthroplasty. *J Arthroplasty.* 2016;31(12):2660–2667. doi:10.1016/j.arth.2016.06.004
12. Noble PC, Conditt MA, Cook KF, et al. Patient expectations affect satisfaction with total knee arthroplasty. *Clin Orthop Relat Res.* 2006;452:35–43. doi:10.1097/01.blo.0000238825.63648.1e
13. Calkins TE, Culvern C, Hahhas CR, et al. External validity of a new prediction model for patient satisfaction after total knee arthroplasty. *J Arthroplasty.* 2019;34(8):1677–1681. doi:10.1016/j.arth.2019.04.021
14. Noble PC, Scuderi GR, Brekke AC, et al. Development of a new Knee Society scoring system. *Clin Orthop Relat Res.* 2011;470(1):20–32. doi:10.1007/s11999-011-2152-z
15. Ellis HB, Howard KJ, Khaleel MA, et al. Effect of psychopathology on patient-perceived outcomes of total knee arthroplasty within an indigent population. *J Bone Jt Surg Am.* 2012;94(12):e84. doi:10.2106/JBJS.K.00888
16. Bierke S, Petersen W. Influence of anxiety and pain catastrophizing on the course of pain within the first year after uncomplicated total knee replacement: a prospective study. *Arch Orthop Trauma Surg.* 2017;137(12):1735–1742. doi:10.1007/s00402-017-2797-5
17. Darnall BD, Sturgeon JA, Cook KF, et al. Development and validation of a daily pain catastrophizing scale. *J Pain.* 2017;18(9):1139–1149. doi:10.1016/j.jpain.2017.05.003
18. Kim SH, Yoon KB, Yoon DM, et al. Influence of centrally mediated symptoms on postoperative pain in osteoarthritis patients undergoing total knee arthroplasty: a prospective observational evaluation. *Pain Pract.* 2015;15(6):E46–53. doi:10.1111/papr.12311
19. Neblett R, Cohen H, Choi Y, et al. The central sensitization inventory (CSI): establishing clinically significant values for identifying central sensitivity syndromes in an outpatient chronic pain sample. *J Pain.* 2013;14(5):438–445. doi:10.1016/j.jpain.2012.11.012

### Orthopedic Research and Reviews

### Publish your work in this journal

Orthopedic Research and Reviews is an international, peer-reviewed, open access journal that focusing on the patho-physiology of the musculoskeletal system, trauma, surgery and other corrective interventions to restore mobility and function. Advances in new technologies, materials, techniques and pharmacological agents are particularly

welcome. The manuscript management system is completely online and includes a very quick and fair peer-review system, which is all easy to use. Visit <http://www.dovepress.com/testimonials.php> to read real quotes from published authors.

Submit your manuscript here: <https://www.dovepress.com/orthopedic-research-and-reviews-journal>

Dovepress