

## MCP-1/CCR2 signaling-mediated astrocytosis is accelerated in a transgenic mouse model of SOD1-mutated familial ALS

メタデータ	言語: eng
	出版者:
	公開日: 2021-10-20
	キーワード (Ja):
	キーワード (En):
	作成者: KAWAGUCHI-NIIDA, Motoko, YAMAMOTO, Tomoko , KATO, Yoichiro , INOSE, Yuri , SHIBATA, Noriyuki
	メールアドレス:
URL	所属:
	<a href="http://hdl.handle.net/10470/00032990">http://hdl.handle.net/10470/00032990</a>

This work is licensed under a Creative Commons Attribution 3.0 International License.



RESEARCH

Open Access

# MCP-1/CCR2 signaling-mediated astrogliosis is accelerated in a transgenic mouse model of SOD1-mutated familial ALS

Motoko Kawaguchi-Niida\*, Tomoko Yamamoto, Yoichiro Kato, Yuri Inose and Noriyuki Shibata

## Abstract

**Background:** Emerging evidence suggests that innate immunity and increased oxidative stress contribute to pathomechanisms in amyotrophic lateral sclerosis (ALS). The aim of the present study was to verify the involvement of monocyte chemoattractant protein-1 (MCP-1) and its specific CC chemokine receptor 2 (CCR2) in the disease progression of ALS. We here demonstrate the expression state of MCP-1 and CCR2 in lumbar spinal cords of mice overexpressing a transgene for G93A mutant human superoxide dismutase 1 (SOD1) (ALS mice) as a mouse model of ALS as well as the involvement of MCP-1/CCR2-mediated signaling in behavior of cultured astrocytes derived from those mice.

**Results:** Quantitative polymerase chain reaction analysis revealed that MCP-1 and CCR2 mRNA levels were significantly higher in ALS mice than those in nontransgenic littermates (control mice) at the presymptomatic stage. Immunoblot analysis disclosed a significantly higher CCR2/ $\beta$ -actin optical density ratio in the postsymptomatic ALS mouse group than those in the age-matched control mouse group. Immunohistochemically, MCP-1 determinants were mainly localized in motor neurons, while CCR2 determinants were exclusively localized in reactive astrocytes. Primary cultures of astrocytes derived from ALS mice showed a significant increase in proliferation activity under recombinant murine MCP-1 stimuli as compared to those from control mice.

**Conclusions:** Our results provide in vivo and in vitro evidence that MCP-1 stimulates astrocytes via CCR2 to induce astrogliosis in ALS with SOD1 gene mutation. Thus, it is likely that MCP-1/CCR2-mediated signaling is involved in the disease progression of ALS.

**Keywords:** Amyotrophic lateral sclerosis, Astrocyte, CCR2, MCP-1, Motor neuron, SOD1

## Background

Amyotrophic lateral sclerosis (ALS) is a late onset neurodegenerative disease characterized by a progressive and selective loss of motor neurons in the motor cortex, brain stem motor nuclei, and spinal cord ventral horns [1]. Patients affected with ALS develop progressive muscle weakness associated with neurogenic amyotrophy, and they will die of respiratory failure within 3–5 years unless undergoing artificial ventilation [2]. Approximately 10% of the ALS patients are familial. About 20% of the familial ALS patients are associated with mutations in the gene for superoxide dismutase 1 (SOD1) [1]. Mice

carrying a transgene for the mutant human SOD1 gene demonstrate clinicopathological features resembling human ALS [3]. Thus, mutant human SOD1 transgenic mice have been used in a large number of studies on ALS as an outstanding animal model of ALS.

Although the complete pathomechanism of ALS has not yet been understood, several studies have obtained evidence that inflammatory processes, including increased levels of proinflammatory cytokines and proliferation and activation of glial cells in the main lesions, are involved in the disease progression [4]. Actually, our previous report showed increased levels of activated form of p38 mitogen-activated protein kinase (MAPK) and reduced levels of inhibitor of kappa B- $\alpha$  (I $\kappa$ B $\alpha$ ) in G93A mutant SOD1 transgenic mice as well as a beneficial effect of pioglitazone, an antiinflammatory agent of

\* Correspondence: mnkawa@research.twmu.ac.jp  
Department of Pathology, Tokyo Women's Medical University, 8-1 Kawada-cho, Shinjuku-ku, Tokyo 162-8666, Japan

the thiazolidinedione group and an artificial agonist of peroxisome proliferator-activated receptor gamma, on survival of motor neurons and suppression of glial activation through inhibition of p38 MAPK activation and upregulation of I $\kappa$ B $\alpha$  expression [5].

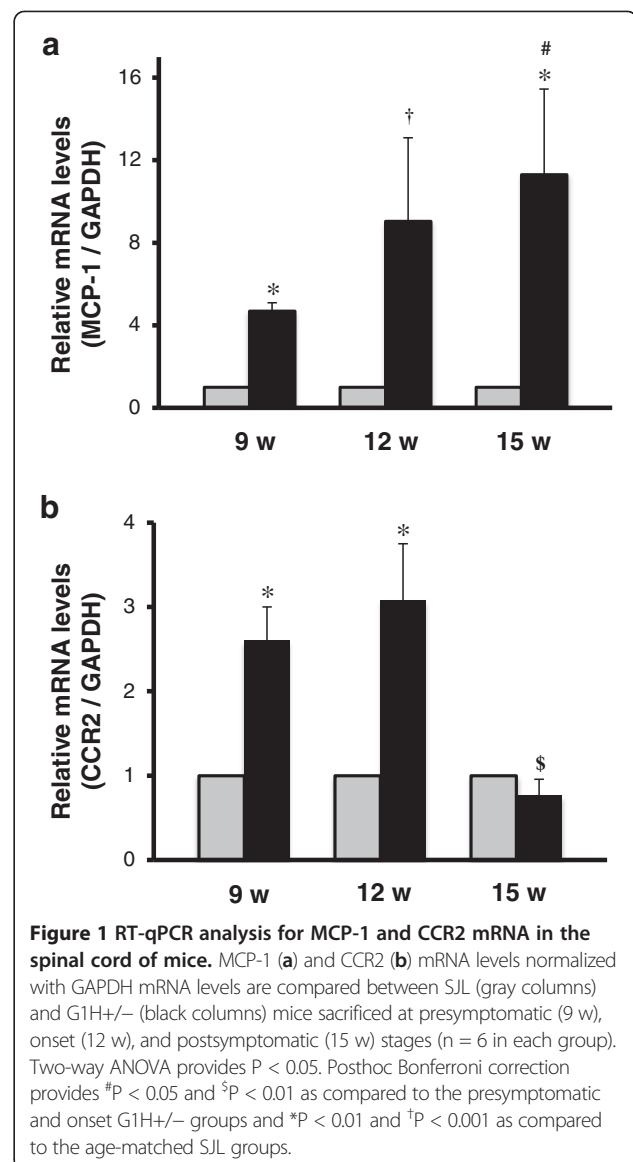
As reviewed by Conduetier et al., several investigations have demonstrated implications for monocyte chemoattractant protein-1 (MCP-1), a synonym of CC chemokine ligand 2 (CCL2), in neurological disorders [6]. MCP-1, an 8 kDa secretory protein, is released from certain cells to exert a potent proinflammatory effect on its target cells by binding to the specific receptor CCR2 [7]. MCP-1/CCR2-mediated signaling drives the downstream phosphatidylinositol-3 kinase/Akt and MAPK pathways [8-10]. It is known that MCP-1 induces chemotaxis of macrophages and microglia, leading to pathological microgliosis and inflammatory activation in the lesions [11]. This is supported by a number of studies showing that MCP-1 knockout mice are resistant to stroke and autoimmune encephalomyelitis [12,13].

Recent studies have suggested implications for MCP-1 in ALS. Increased levels of MCP-1 in serum or cerebrospinal fluid of sporadic and familial ALS patients [14-18] or spinal cord tissue samples from mutant SOD1 transgenic mice [19,20] have been reported. On the other hand, it is of interest that CCR2 expression levels on the cell surface of circulating monocytes in sporadic ALS patients were very low [21,22]. However, the role of CCR2 in a mouse model of ALS remains to be determined. To address this issue, we evaluated the expression state of CCR2 as well as MCP-1 in the spinal cord of mutant human SOD1 transgenic mice, by quantitative and morphological approaches using a reverse transcription-quantitative polymerase chain reaction (RT-qPCR), immunohistochemistry, and immunoblotting techniques. We also evaluated in vitro effects of MCP-1 using primary cultures of astrocytes derived from the transgenic mice and nontransgenic littermates.

## Results

### MCP-1 and CCR2 mRNA levels are changed in the spinal cord of ALS mice

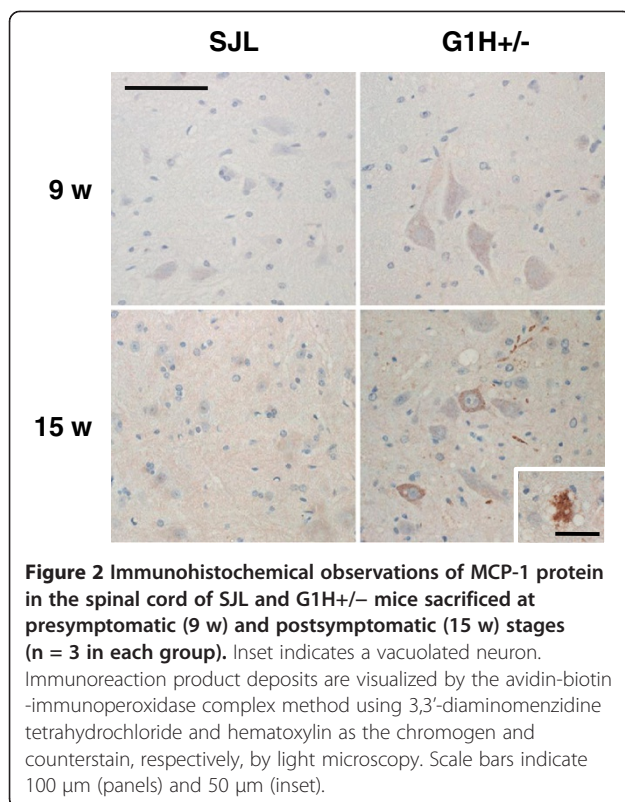
Using RT-qPCR techniques, expression levels of MCP-1 and CCR2 mRNA in lumbar spinal cords from G1H+/- (ALS mice) and SJL (control mice) mice were quantitatively compared between the presymptomatic (9-weeks-old mice), onset (12-weeks-old mice), and postsymptomatic (15-weeks-old mice) groups. MCP-1 mRNA analysis revealed clear results (Figure 1a). In all of these stages, MCP-1 mRNA levels were significantly higher in the G1H+/- groups than those in the age-matched SJL groups and age-dependently increased in the G1H+/- groups but not the SJL groups. On the other hand, CCR2 mRNA analysis revealed complicated results (Figure 1b). CCR2 mRNA



levels were significantly higher in the presymptomatic and onset G1H+/- groups than those in the age-matched SJL groups, whereas there was no significant difference in the levels between the postsymptomatic G1H+/- group and the age-dependent SJL group. In G1H+/- mice, CCR2 mRNA levels tended to be higher in the onset group than that in the presymptomatic group, and were significantly lower in the postsymptomatic group than in the other groups. By contrast, SJL mice showed constant CCR2 mRNA levels among the three stage groups.

### MCP-1 protein is mainly expressed in spinal cord motor neurons of ALS mice

MCP-1 immunohistochemistry made a striking contrast between G1H+/- and SJL mice (Figure 2). While MCP-1 immunoreactivity was distinct in pre- and



postsymptomatic G1H+/- mice, it was only very weak or not at all in the age-matched SJL mice. In G1H+/- mice, immunoreactivity was mainly detectable in the cytoplasm of motor neurons, was more intense in the postsymptomatic group, and was prominent in vacuolated neurons, in particular, but was very weak in glial cells.

#### CCR2 protein is mainly expressed in spinal cord reactive astrocytes of ALS mice

CCR2 immunoreactivity also showed distinct alterations between SJL and G1H+/- mice (Figure 3a). The immunoreactivity was only very weak in young to old SJL mice and presymptomatic G1H+/- mice. By contrast, it was highly intense in onset and postsymptomatic G1H+/- mice, and was particularly prominent in glial cells, but was undetectable in neurons. To identify CCR2-immunoreactive cells, we performed double-labeled immunofluorescence staining of sections from G1H+/- mice at onset stage. CCR2 immunoreactivity was detected in almost all GFAP-immunoreactive astrocytes (Figure 4d-f; g-i), whereas it was detected in only a few NeuN-immunoreactive neurons (Figure 4a-c) and Iba-1 or CD11b-immunoreactive microglia (Figure 4j-l; m-o). There was no significant difference in staining patterns between the two different anti-CCR2 antibodies. These results were confirmed by quantitative image analysis; the great majority of CCR2-immunoreactive cells in

spinal cord ventral horns were astrocytes but not neurons or microglia (Figure 5).

#### CCR2 protein levels are increased in the spinal cord of ALS mice

Expression levels of CCR2 protein in lumbar spinal cords were quantitatively compared between the postsymptomatic SJL and G1H+/- groups. Immunoblot analysis disclosed CCR2-immunoreactive signals, prominent in the G1H+/- group, at a mobility of 42 kDa (Figure 3b). Densitometric analysis revealed that immunoreactive signals for CCR2 normalized with those for  $\beta$ -actin were significantly higher in the G1H+/- group than in the age-matched SJL group (Figure 3c).

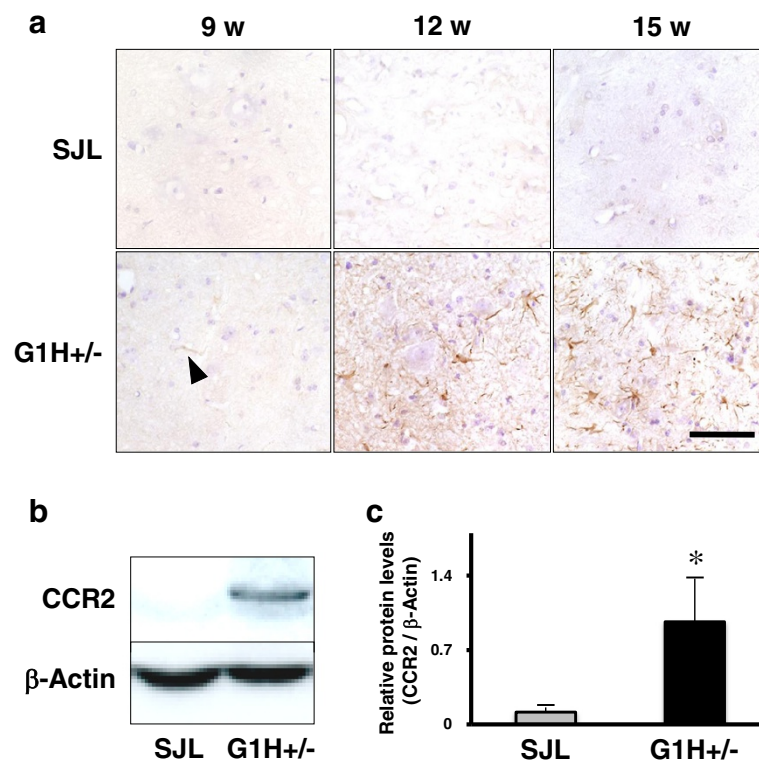
#### rmMCP-1 induces proliferation of cultured astrocytes derived from ALS mice via CCR2

Using primary cultures, we compared effects of MCP-1 on the proliferative activity of primary astrocytes derived from SJL and G1H+/- mice, as determined by a CCK-8 kit. In the absence of rmMCP-1, the basal levels of proliferation activity of astrocytes were significantly increased in the G1H+/- group as compared to the SJL group. In the presence of rmMCP-1, the levels exhibited a dose-dependent increase in the G1H+/- groups but not the SJL groups (Figure 6a). Phase-contrast images verified an increased density of astrocytes derived from G1H+/- mice as compared to those from SJL mice (Figure 6b). CCR2 immunoreactivity was intense and localized in the cytoplasm of astrocytes derived from G1H+/- mice, whereas it was only weak in astrocytes derived from SJL mice (Figure 6c). To determine whether the MCP-1-driven proliferation of astrocytes derived from G1H+/- mice may be mediated by the specific receptor CCR2 stimulation, we evaluated the influence of the CCR2 antagonist on the proliferation activity. As a consequence, the levels were significantly reduced in the antagonist-treated G1H+/- groups as compared to the rmMCP-1 concentration-matched, antagonist-untreated G1H+/- groups (Figure 6d).

## Discussion

#### Morphological and quantitative evaluations for MCP-1 in SOD1-mutated mice

It is known that MCP-1 is upregulated by oxidative stress and inflammatory stimuli associated with several pathological conditions including inflammatory and autoimmune diseases and injuries [23,24]. Expression patterns of MCP-1 in the central nervous system (CNS) of postnatal mammals have been well described. Under physiological conditions, MCP-1 is constitutively expressed in various types of cells, such as neurons, astrocytes, microglia, and endothelial cells at a minimal level. By contrast, it is highly induced in these cells or



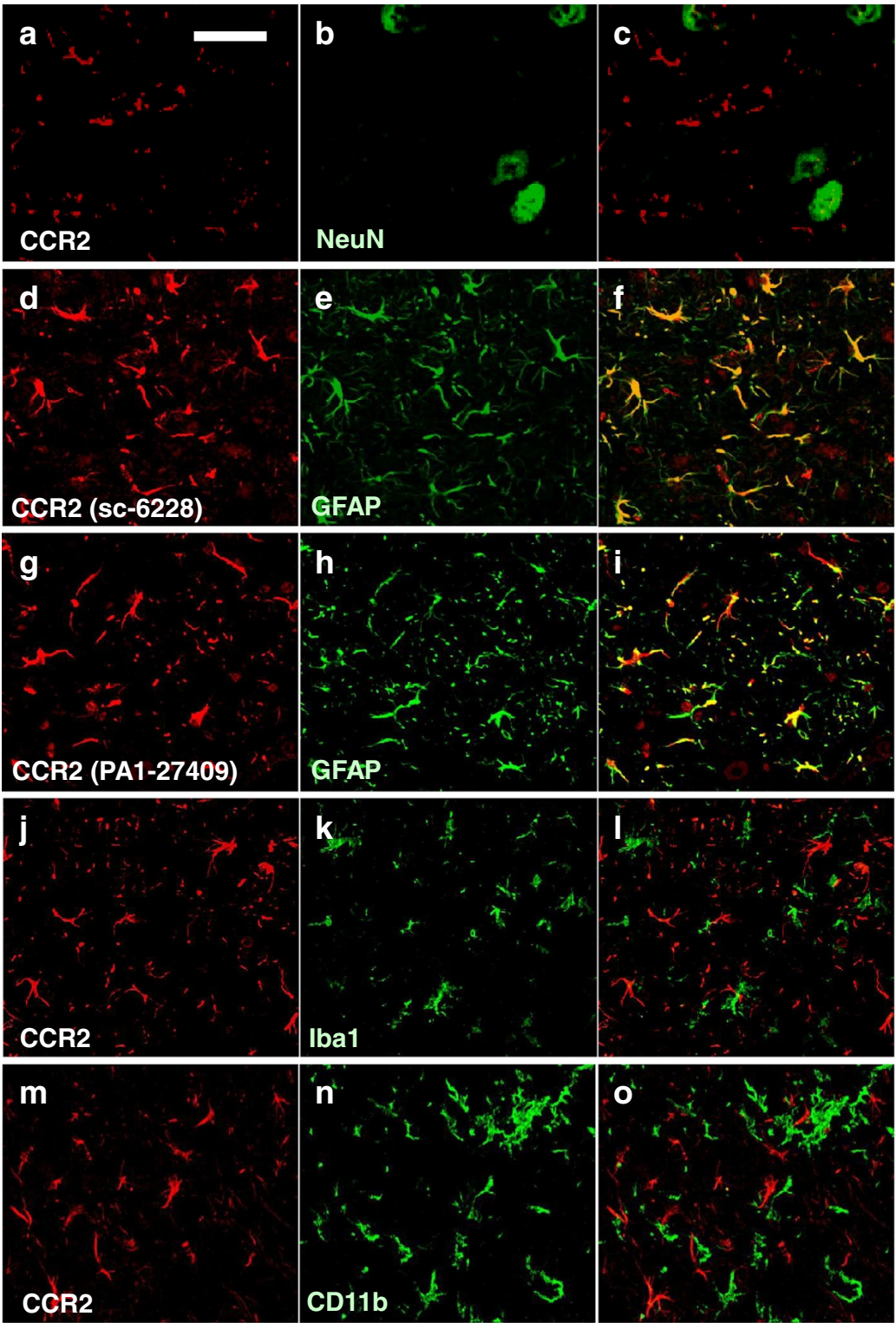
**Figure 3** Immunohistochemical (a), immunoblot (b) and densitometric (c) analyses for CCR2 protein in the spinal cord of SJL and G1H +/– mice sacrificed at presymptomatic (9 w), onset (12 w) and postsymptomatic (15 w) stages. Immunoreaction product deposits are visualized by the avidin-biotin-immunoperoxidase complex method using 3,3'-diaminomenzidine tetrahydrochloride and hematoxylin as the chromogen and counterstain, respectively, by light microscopy. Scale bar indicates 100  $\mu$ m (a). Electrophoretic mobility (b) and optical density (c) are compared between the postsymptomatic SJL and G1H+/- groups (n = 5 in each group). Two-way ANOVA provides  $P < 0.05$ . Posthoc Bonferroni correction provides \* $P < 0.05$  as compared to the SJL group.

peripheral blood-derived monocytes, T cells, or natural killer cells under pathological conditions such as traumatic injury, excitotoxicity, ischemia, inflammation, and neurodegeneration [25-31].

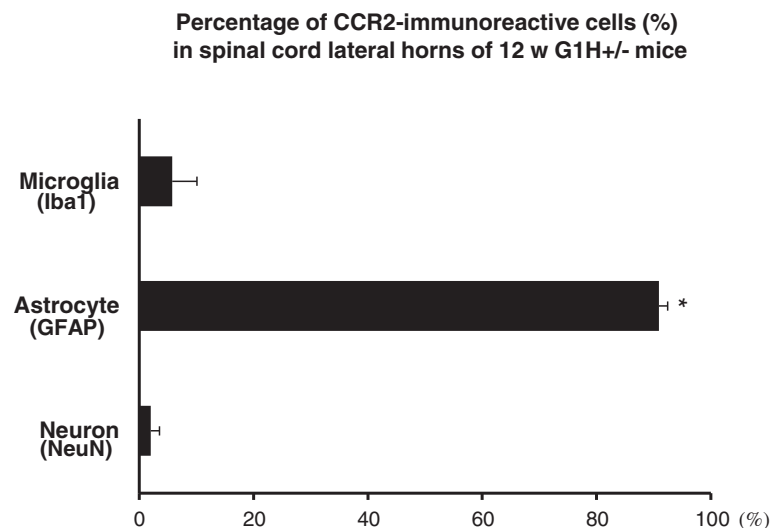
As reviewed by McCombe and Henderson, emerging evidence suggests the involvement of proinflammatory mechanisms in ALS. Recent studies have demonstrated increased expression levels of proinflammatory cytokines and chemokines in activated microglia and reactive astrocytes in human ALS and its transgenic mouse models [32,33]. Several studies indicated increased expression levels of MCP-1 in the spinal cord of sporadic ALS patients and SOD1-mutated mice [20]. Other investigators demonstrated the correlation between the cerebrospinal fluid MCP-1 levels and the disease progression and severity of ALS [33,34].

In the present study, immunohistochemical analysis revealed that MCP-1 determinants were mainly localized in the cytoplasm of motor neurons in the spinal cord of G93A mutant SOD1-overexpressing mice in presymptomatic, onset, and postsymptomatic stages, and were, in particular, more intense in vacuolated

neurons, than those in age-matched control mice. RT-qPCR analysis of MCP-1 mRNA disclosed age-related increases in G93A mice but not SJL mice, and significant increases in young to old G93A mice relative to the age-matched SJL mice. These observations are consistent with basic cell biological studies indicating the production of MCP-1 in developing human neurons and the NT2N human neuronal cell line [35,36]. Consistent with our findings, Henkel et al. reported increased levels of MCP-1 mRNA and protein in motor neurons as well as reactive glial cells in all stages of SOD1-mutated transgenic mouse models of ALS [20]. Another study demonstrated increased expression of MCP-1 in G93A mutant SOD1-expressing microglia [37,38]. These observations indicate that MCP-1 could be produced by motor neurons and glial cells in the spinal cord of SOD1-mutated ALS mice. However, it should be considered with the caveat that the discrepancy of staining intensity of MCP-1 in glial cells between the present and previous studies may result from differences in the methodologies used.



**Figure 4** Immunohistochemical observations of CCR2 protein in spinal cord ventral horns from G1H+/- mice sacrificed at onset stage (12 w). Localization of CCR2 immunoreactivity is verified by comparison with that of immunoreactivities for NeuN-immunoreactive (b) neurons, GFAP-immunoreactive (e, h) astrocytes, and Iba1-immunoreactive (k) and CD11b-immunoreactive (n) microglia. CCR2 immunoreactivity is detected with the two different antibodies sc-6228 (a, d, j, m) and PA1-27409 (g), respectively. Panels (c, f, i, l, o) indicate merged images in two other panels of each line. Immunoreactive signals are detected by the double-labeled immunofluorescence method using secondary antibodies conjugated with Cy3 (red) or FITC (green). Scale bar indicates 50 μm (a-o).



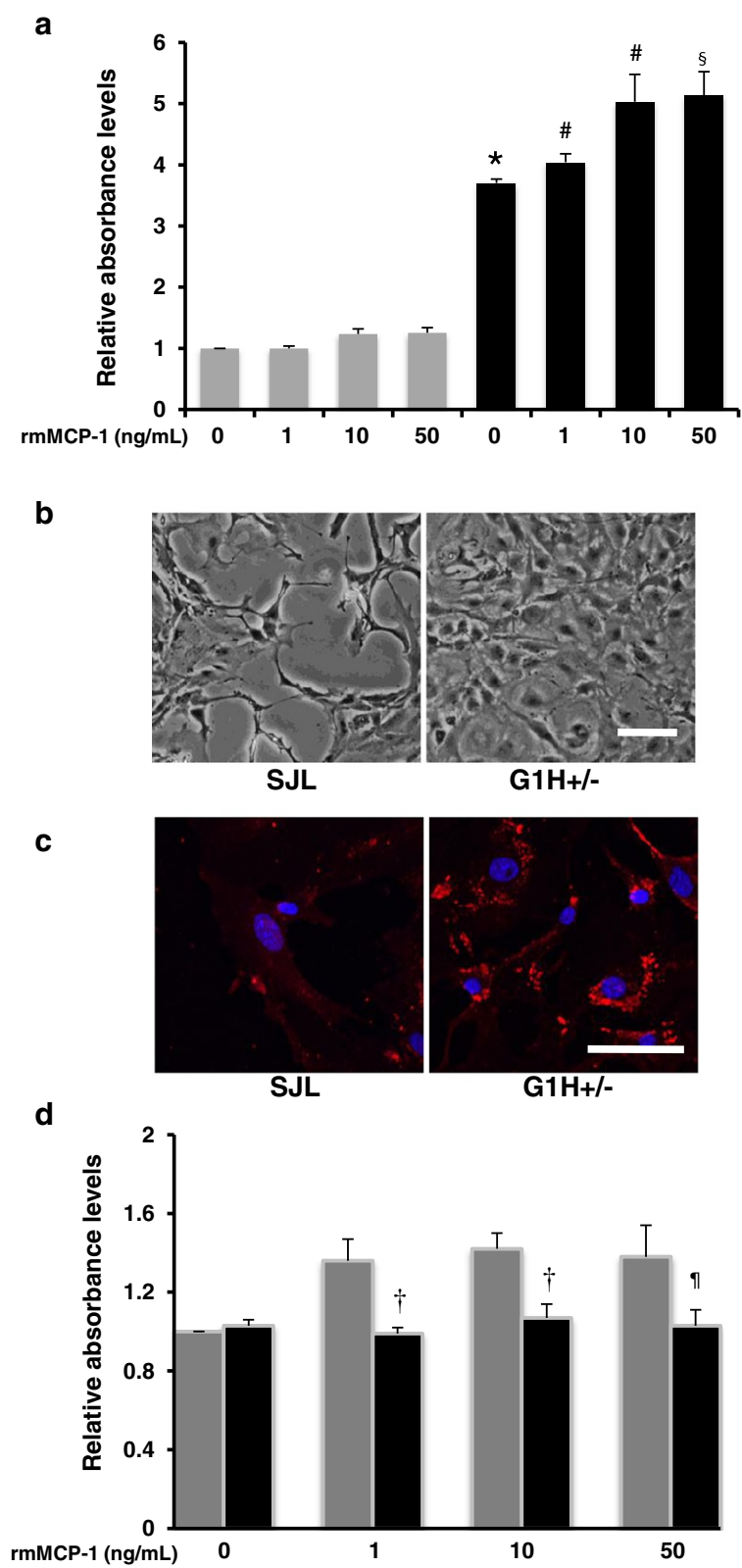
**Figure 5** The percentage of CCR2-immunoreactive cells in neurons, astrocytes and microglia. Data obtained by the double-labeled immunofluorescence method are compared by two-way ANOVA ( $P < 0.01$ ) and posthoc Bonferroni correction (\* $P < 0.01$  as compared to the neuronal and microglial groups).

#### Morphological and quantitative evaluations for CCR2 in SOD1-mutated mice

It is known that CCR2 acts as a membrane-bound receptor for the specific ligand MCP-1. CCR2 expression is regulated at a low level under physiological conditions [39], whereas it is upregulated by inflammatory stimuli [40]. In several tissues other than the CNS, CCR2 is constitutively expressed in monocytes and macrophages on their cell surface. In the CNS, it has been shown that CCR2 is expressed in microglia and is upregulated under pathological conditions such as multiple sclerosis, Alzheimer's disease, and traumatic brain injury [30,41,42]. In the present study, the double-labeled immunofluorescence staining method revealed that CCR2 immunoreactivity was intense and exclusively localized in reactive astrocytes in the spinal cord of G93A mice at onset and postsymptomatic stages but not SJL mice at any stage. Several studies have provided evidence that astrocytes express CCR2 as the following: (1) MCP-1 and CCR2 are colocalized in astrocytes but not microglia in rat models of experimental autoimmune encephalomyelitis [43]; (2) MCP-1-driven astrocytic activation is associated with CCR2 induction mediated through activation of Akt and NF- $\kappa$ B [44]; (3) primary cultures derived from human and simian astrocytes express CCR2 mRNA and upregulate CCR2 by stimulation of TNF $\alpha$  and IFN $\gamma$  [40]; (4) cultured human astrocytes express CCR2 mRNA and protein and perform chemotaxis and calcium influx in response to MCP-1 stimuli [45]. These observations support our data and suggest that CCR2-expressing astrocytes survive and demonstrate astrogliosis occurring in the advanced stage of a mutant SOD1 transgenic mouse of ALS.

Under physiological conditions, astrocytes behave as architectural components as well as participate in neuroprotective mechanisms, forming morphological and functional bases of the CNS. On the other hand, astrocytes are involved in several pathological conditions by exerting diverse effects on lesional microenvironments [46]. In particular, astrocytes are implicated in the pathomechanisms of neurological disorders, including Alzheimer's disease [47], Parkinson's disease [48], ALS [49,50], multiple sclerosis [51], and cerebral ischemia [52] via inflammatory responses. Relevantly, recent evidence that selective excision of a mutated SOD1 gene in astrocytes inhibited microglial activation and slowed disease progression suggests that mutant SOD1-expressing astrocytes are responsible for non-cell autonomous motor neuron death mediated through inflammatory mechanisms on the basis of crosstalk to microglia [53].

In the present study, we investigated CCR2 mRNA and protein expression levels in the spinal cord of SJL and G93A mice. In SJL mice, both the mRNA and protein levels were constantly low at presymptomatic, onset, and postsymptomatic stages. In G93A mice, CCR2 mRNA levels were increased in presymptomatic and onset stages but decreased in postsymptomatic stage, whereas CCR2 protein levels were significantly higher in the postsymptomatic G93A group than the age-matched SJL group. The discrepancy in expression levels between CCR2 mRNA and protein in postsymptomatic G93A mice may reflect certain mechanisms based on SOD1 mutation. It has been shown that over 30% of genes exhibit significantly divergent patterns of mRNA and protein levels in *Streptomyces coelicolor* and that the



**Figure 6** (See legend on next page.)

(See figure on previous page.)

**Figure 6 Effects of MCP-1 on proliferation activity of astrocytes derived from SJL and G1H+/- mice.** Cultured astrocytes derived from SJL (gray columns) and G1H+/- (black columns) mice are stimulated with recombinant murine MCP-1 (rmMCP-1) at concentrations of 0, 1, 10 and 50 ng/mL for 48 h, and the proliferation activity determined by a CCK8 kit is compared (**a**). The G1H+/- astrocytes are also stimulated with 10 ng/mL rmMCP-1 in the presence (black columns) or absence (gray columns) of treatment with 10  $\mu$ M CCR2 antagonist, and the proliferation activity is compared (**d**). Two-way ANOVA provides  $P < 0.05$  (**a**, **d**). Posthoc Bonferroni correction provides  $^*P < 0.001$  as compared to the MCP-1-unstimulated SJL cell group,  $^{\#}P < 0.05$  and  $^{\S}P < 0.01$  as compared to the MCP-1-unstimulated G1H+/- group, and  $^{\Delta}P < 0.05$  and  $^{\dagger}P < 0.01$  as compared to the CCR2 antagonist-untreated, rmMCP-1 concentration-matched G1H+/- groups. Morphological changes of cultured astrocytes stimulated with 10 ng/mL rmMCP-1 are compared between the SJL and G1H+/- groups by phase-contrast images (b) and CCR2 immunocytochemistry detected by the immunofluorescence method using a secondary antibody conjugated with Cy3 (red) and DAPI (blue) as a nuclear marker (c). Scale bars indicate 50  $\mu$ m (b, c).

mRNA-protein discordance is attributable to differences in protein translation and degradation rates [54]. The stability of CCR2 protein in G93A mice might be changed by proteasome inhibition, which may occur in the presence of oxidative stress originating in mutant SOD1 toxicity [55]. CCR2 mRNA levels in human monocytes are also downregulated by treatment with bacteria-derived toxins such as lipopolysaccharide [56]. In cultured human monocytes, mRNA expression levels of the major chemokine receptors, CCR2, CCR5, and CXCR4 are upregulated by treatment with reactive oxygen species, including hydrogen peroxide, and are downregulated by treatment with antioxidant reagents such as pyrrolidine dithiocarbamate and *N*-acetylcysteine, although these treatments do not influence the stability of CCR2 protein on the cell surface [57]. Irradiation-triggered oxidative stress induces CCR2 protein expression associated with the lipid peroxidation product 4-hydroxy-2-nonenal in mouse hippocampi [58]. Moreover, a recent study indicated reduced CCR2 mRNA levels in circulating monocytes from sporadic ALS patients [22]. These observations suggest that altered redox states in G93A mice contribute to downregulation of CCR2 mRNA and upregulation or stabilization of CCR2 protein, leading to an increased innate immune response to SOD1 mutation-related oxidative stress.

#### MCP-1 induces proliferation of astrocytes derived from SOD1-mutated mice

It is known that neuroinflammation based on activation of astrocytes and microglia diminishes survival of motor neurons to exacerbate disease progression of ALS [4]. Accumulating evidence suggests that astrocytes expressing mutant SOD1 are highly toxic to motor neurons. In particular, recent studies indicated that cultured astrocytes expressing mutant SOD1 demonstrated increased proliferation activity and reduced glutamate transporter-1 expression. The mutant SOD1-expressing astrocytes seems to produce certain soluble factors, which are toxic to motor neurons and activate microglia to induce motor neuron death [50,59]. In the present study, the basic and MCP-1-driven levels of proliferation activity and CCR2 expression were significantly increased in cultured astrocytes

derived from G93A mice as compared to those from SJL mice. Moreover, the MCP-1-driven proliferation activity in the G93A astrocytes was suppressed by a CCR2 antagonist. Given the age-related increase in MCP-1 mRNA levels in the spinal cord of G93A mice, it is evident that astrocytes carrying a transgene for mutant SOD1 play a pivotal role in the disease progression via MCP-1/CCR2-mediated signaling.

#### Conclusions

Taken together, we here showed a significant upregulation of MCP-1 and CCR2 in the spinal cord of G93A mutant human SOD1-overexpressing mice relative to nontransgenic littermates. This upregulation occurred even if in presymptomatic stage and was then enhanced along with aging. While MCP-1 was mainly expressed in motor neurons, CCR2 was mainly expressed in reactive astrocytes. These results provide *in vivo* evidence that MCP-1, released from the lesional cells including motor neurons, selectively stimulates CCR2-expressing astrocytes in a paracrine manner, leading to cell activation such as proliferation. Our results suggest that astrocytic activation driven by the MCP-1/CCR2 signaling pathway is a newly identified target of ALS therapies. Finally, determining the precise role of the MCP-1/CCR2 signaling pathway in SOD1-mutated human ALS requires further investigations.

#### Methods

##### Animals

The present study was approved by the Animal Research Ethics Committee of Tokyo Women's Medical University. Mice overexpressing a transgene for G93A mutant human SOD1 [high expresser G1H line (G1H+/-) mice] [60] and nontransgenic littermates [background strain of Jackson Laboratory line (SJL) mice] were obtained from Jackson Laboratory (Bar Harbor, ME, USA). We maintained G1H+/- mice by mating transgenic males with nontransgenic females. Transgenic offsprings were genotyped by detecting human SOD1 protein in addition to mouse SOD1 protein using immunoblots as described before [5], and nontransgenic littermates were used as negative controls of the genetic background. After birth, G1H+/- mice

**Table 1 Primer sets for reverse transcription-quantitative polymerase chain reaction**

Gene	Sequence	Amplicon (bp)
MCP-1	F: 5'-GCATCCACGTGTTGGCTCA-3'	95
	R: 5'-CTCCAGCCTACTCATTGGGATCA-3'	
CCR2	F: 5'-ACAGCTCAGGATTAACAGGGACTTG-3'	129
	R: 5'-ACCACTGTCATGCACACATGAC-3'	
GAPDH	F: 5'-TGTGTCCGTCGTGGATCTGA-3'	150
	R: 5'-TTGCTGTTGAAGTCGCAGGAG-3'	

Abbreviations: MCP-1, monocyte chemoattractant protein-1; CCR2, CC chemokine receptor 2; GAPDH, glyceraldehyde 3-phosphate dehydrogenase; F, forward; R, reverse; bp, base pair.

appeared clinically intact at 9 w (presymptomatic stage), began to show clinical symptoms such as weakness and tremor prominent in their hindlimbs at around 12 w (onset stage), developed progressive gait disturbance reminiscent of human ALS (postsymptomatic stage), and died of respiratory failure or an eating disability by 20 w. Both G1H+/- and SJL mice were divided into the presymptomatic, onset, and postsymptomatic groups, and were sacrificed under anesthesia with ether ethanol at the respective periods (9 w, 12 w, and 15 w) to obtain lumbar spinal cords, including the main lesions in the mouse ALS-like disease.

#### RT-qPCR analysis

The primer sets used in RT-qPCR are summarized in Table 1. All of them were purchased from Takara. Total RNA was extracted from freshly frozen materials of lumbar spinal cords using the RNeasy Lipid Tissue Mini kit (Qiagen, Valencia, CA, USA), and in turn were used for RT to obtain cDNA using the Prime Script RT-PCR kit (Takara, Tokyo, Japan). qPCR was performed using cDNA derived from 50 ng of total RNA, primer sets at a final concentration of 50 pM, and SYBR Premix Ex Taq II (Takara) according to the manufacturer's instructions. Amplification profiles consisted of 95°C for 10 sec (initial denaturing), followed by 45 cycles at 95°C for 5 sec

(denaturing), 55°C for 10 sec (annealing) and 72°C for 20 sec (extension). At the end of each run, a melting point analysis was performed to validate the specificity of the PCR products. The quality of the PCR products was also confirmed by ethidium bromide-supplemented agarose gel electrophoresis. House-keeping gene for glyceraldehyde dehydrogenase (GAPDH) was used to normalize transcription levels of MCP-1 and CCR2. The normalized data were compared between the different groups (n = 6 in each group).

#### Immunohistochemical analysis

The primary antibodies employed in immunohistochemistry are summarized in Table 2. NeuN and glial fibrillary acidic protein (GFAP) were used as markers for neurons and astrocytes, respectively. Both CD11b and Iba1 were used as markers for microglia. For immunohistochemistry, mice were perfused with phosphate-buffered saline, pH 7.5 (PBS) followed by 3% paraformaldehyde in PBS. Spinal cords were subsequently removed and processed for making paraffin-embedded materials or optimal cutting temperature compound-embedded frozen materials. Multiple 7-μm-thick paraffin-embedded sections and 10-μm-thick frozen sections were used for immunohistochemical staining. Paraffin-embedded sections were deparaffinized, and frozen sections were air-dried. These sections were subsequently rehydrated, quenched for 20 min in 3% hydrogen peroxide in PBS, pretreated for 30 min at room temperature with 3% bovine serum albumin in PBS, and in turn incubated overnight at 4°C with a primary antibody in PBS containing 0.1% Triton X-100 and 1% of normal horse serum. Antibody binding was visualized by the avidin-biotin-immunoperoxidase complex (ABC) method using the appropriate Vectastain ABC kit (Vector Laboratories, Burlingame, CA, USA) according to the manufacturer's instructions. 3,3'-Diaminobenzidine tetrahydrochloride was the chromogen, and hematoxylin, the counterstain.

Tissue distribution of MCP-1 and CCR2 was roughly verified by comparison with consecutive sections stained with hematoxylin-eosin (H&E). Immunohistochemical localization of CCR2 was precisely identified by the double-labeled immunofluorescence method. In brief, sections were incubated simultaneously with the primary antibodies against a target substance and a cell marker followed by the secondary antibodies such as Cy3-conjugated donkey anti-goat IgG and fluorescein isothiocyanate (FITC)-conjugated donkey anti-mouse, rat, or rabbit IgG (each diluted 1:200; Jackson ImmunoResearch Laboratory, West Grove, PA, USA). DAPI was used as a nuclear stain. Immunoreaction product deposits were observed and recorded with a fluorescence microscope (Nikon ECLIPSE TS100; Nikon, Tokyo, Japan) or a confocal laser microscope (LSM 510 Meta, Carl Zeiss, Jena, Germany). The percentage of CCR2-immunoreactive

**Table 2 Primary antibodies used for immunohistochemistry**

Antigen	Species	Dilution	Cat. No.	Source
MCP-1	Rabbit	1:100	ab7202	Abcam
CCR2	Goat	1:100	sc-6228	SCB
CCR2	Goat	1:100	PA1-27409	Thermo
NeuN	Mouse	1:300	MAB377	Chemicon
GFAP	Rabbit	1:500	z0334	Dako
CD11b	Rat	1:50	ab8878	Abcam
Iba1	Rabbit	1:200	019-19741	Wako

Abbreviations: MCP-1, monocyte chemoattractant protein-1; CCR2, CC chemokine receptor 2; GFAP, glial fibrillary acidic protein; Iba1, ionized calcium-binding adaptor molecule 1; SCB, Santa Cruz Biotechnology.

cells in neurons, astrocytes, and microglia in the ventral horns was verified by NIH image J software.

### Immunoblot analysis

Resected fresh mouse spinal cords were stored at  $-80^{\circ}\text{C}$  until use. For immunoblotting, frozen spinal cord materials were homogenized in 20 mM Tris-buffered saline, pH 8.5 (TBS), supplemented with 5 mM ethylenediaminetetraacetic acid (EDTA), 10% glycerol, 1% Triton X-100, 0.1% sodium dodecyl sulfate (SDS), 0.5% sodium deoxycholic acid, 1 mM phenylmethylsulfonylfluoride, and a protease inhibitor cocktail Complete Mini (Roche Diagnostics, Mannheim, Germany) according to the manufacturer's instructions. The homogenate was then centrifuged at 12,500 g for 15 min to obtain supernatant containing total protein extracts. Protein concentration was determined by the Bradford method [61]. Total protein extracts were boiled for 10 min at  $100^{\circ}\text{C}$  with an equal volume of Laemli's buffer containing 0.05% bromophenol blue, and were used for 12% sodium dodecyl sulfate-polyacrylamide gel electrophoresis. Aliquots of samples (70  $\mu\text{g}$  of protein per lane) were loaded and separated in a gel, were and electroblotted onto a polyvinylidene difluoride (PVDF) membrane (Millipore, Billerica, MA, USA). After transfer, PVDF membranes were pretreated overnight at  $4^{\circ}\text{C}$  in 100 mM TBS, containing 0.1% Tween-20 and 5% skim milk, and then incubated for 1 h at room temperature with the anti-CCR2 antibody (Santa Cruz) at a dilution of 1:1,000 or mouse anti- $\beta$ -actin antibody (Sigma-Aldrich, St. Louis, MO, USA) at a dilution of 1:2,000. Blots processed with omission of the primary antibodies served as negative reaction controls. Immunoreactive signals were visualized by the chemiluminescence method using the appropriate ECL detection system kit (Amersham, Buckinghamshire, UK), scanned with a Light-Capture Cooled Camera system (ATTO, Tokyo, Japan), and imported onto a personal computer. Optical density was then quantified with NIH Image J software. In each sample, immunoreactive signals for CCR2 were normalized by those for  $\beta$ -actin, and the CCR2/ $\beta$ -actin optical density ratio was compared between the different groups.

### Cell culture and proliferation assay

Astrocytes were grown in primary culture as described previously [62]. Briefly, the cerebral hemispheres of newborn SJL and G1H+/- mice were removed, the meninges were carefully removed off, and the cerebral tissues were dissociated with trypsin. The dissociated cells were seeded at  $1.4 \times 10^4$  viable cells/ $\text{cm}^2$  in a plastic culture flask and grown for 2 weeks in Dulbecco's modified Eagle's medium with 20% F-12 and 10% fetal bovine serum at  $37^{\circ}\text{C}$  in a 5% $\text{CO}_2$  incubator. Before experiments, immunocytochemistry confirmed that over 95% of the cells were stained positively for the astrocytic marker GFAP. For proliferation assay, cells were plated on 96-well plates ( $4 \times 10^3$  cells/well) and

allowed to adhere for 24 h at  $37^{\circ}\text{C}$ . The cultures were then stimulated with recombinant murine MCP-1 (rmMCP-1; Pepro Tech, Rocky Hill, NJ, USA) at concentrations of 0, 1, 10 and 50 ng/mL for 48 h in the presence or absence of a CCR2 antagonist (Calbiochem, La Jolla, CA, USA) at a final concentration of 10  $\mu\text{M}$ , followed by incubation with a Cell Counting Kit-8 (CCK-8; Dojindo Laboratories, Kumamoto, Japan) solution at a final concentration of 10  $\mu\text{M}$ , and the cells were incubated for 2 h at  $37^{\circ}\text{C}$ , according to the manufacturer's instructions. The optical absorbance at 450 nm for each sample was measured using a microplate reader (Bio-Lad Laboratories, Richmond, CA, USA).

### Statistics

Data were compared between three or more groups by two-way analysis of variance (ANOVA) followed by posthoc Bonferroni correction. Significance was considered in the case of P-value  $< 0.05$ .

### Competing interests

The authors declare that they have no competing interest.

### Author's contributions

MKN performed most experiments. TY, YK and YI carried out in part the morphological and quantitative analyses. NS participated in the study design and coordination, and helped to draft the manuscript. All authors read and approved the final manuscript.

### Acknowledgements

We would like to thank Dr. Y. Takakuwa for valuable suggestions and Mr. Y. Shigematsu for skillful technical assistance.

Received: 23 April 2013 Accepted: 14 May 2013

Published: 4 June 2013

### References

1. Ince PG, Highley JR, Kirby J, Wharton SB, Takahashi H, Strong MJ, Shaw PJ: Molecular pathology and genetic advances in amyotrophic lateral sclerosis: an emerging molecular pathway and the significance of glial pathology. *Acta Neuropathol* 2011, **122**:657–671.
2. Rowland LP, Shneider NA: Amyotrophic lateral sclerosis. *N Engl J Med* 2001, **344**:1688–1700.
3. Gurney ME, Pu H, Chiu AY, Dal Canto MC, Polchow CY, Alexander DD, Caliendo J, Hentati A, Kwon Y, Deng HX: Motor neuron degeneration in mice that express a human Cu,Zn superoxide dismutase mutation. *Science* 1994, **264**:1772–1775.
4. McCombe PA, Henderson RD: The Role of immune and inflammatory mechanisms in ALS. *Curr Mol Med* 2011, **11**:246–254.
5. Shibata N, Kawaguchi-Niida M, Yamamoto T, Toi S, Hirano A, Kobayashi M: Effects of the PPAR $\gamma$  activator pioglitazone on p38 MAP kinase and I $\kappa$ B $\alpha$  in the spinal cord of a transgenic mouse model of amyotrophic lateral sclerosis. *Neuropathology* 2008, **28**:387–398.
6. Conductier G, Blondeau N, Guyon A, Nahon JL, Rovère C: The role of monocyte chemoattractant protein MCP1/CCL2 in neuroinflammatory diseases. *J Neuroimmunol* 2010, **224**:93–100.
7. Gu L, Tseng SC, Rollins BJ: Monocyte chemoattractant protein-1. *Chem Immunol* 1999, **72**:7–29.
8. Li MQ, Li HP, Meng YH, Wang XQ, Zhu XY, Mei J, Li DJ: Chemokine CCL2 enhances survival and invasiveness of endometrial stromal cells in an autocrine manner by activating Akt and MAPK/Erk1/2 signal pathway. *Fertil Steril* 2012, **97**(4):919–929.
9. Loberg RD, Day LL, Harwood J, Ying C, St John LN, Giles R, Neeley CK, Pienta KJ: CCL2 is a potent regulator of prostate cancer cell migration and proliferation. *Neoplasia* 2006, **8**:578–586.

10. Lu Y, Cai Z, Galson DL, Xiao G, Liu Y, George DE, Melhem MF, Yao Z, Zhang J: Monocyte chemoattractant protein-1 (MCP-1) acts as a paracrine and autocrine factor for prostate cancer growth and invasion. *Prostate* 2006, **66**:1311–1318.
11. El Khoury J, Luster AD: Mechanisms of microglia accumulation in Alzheimer's disease: therapeutic implications. *Trends Pharmacol Sci* 2008, **29**:626–632.
12. Huang DR, Wang J, Kivisakk P, Rollins BJ, Ransohoff RM: Absence of monocyte chemoattractant protein-1 in mice leads to decreased local macrophage recruitment and antigen-specific T helper cell type 1 immune response in experimental autoimmune encephalomyelitis. *J Exp Med* 2001, **193**:713–726.
13. Hughes PM, Allegrini PR, Rudin M, Perry VH, Mir AK, Wiessner C: Monocyte chemoattractant protein-1 deficiency is protective in a murine stroke model. *J Cereb Blood Flow Metab* 2002, **22**:308–317.
14. Baron P, Bussini S, Cardin V, Corbo M, Conti G, Galimberti D, Scarpini E, Bresolin N, Wharton S, Shaw PJ, Silani V: Production of monocyte chemoattractant protein-1 in amyotrophic lateral sclerosis. *Muscle Nerve* 2005, **32**:541–544.
15. Gupta PK, Prabhakar S, Sharma S, Anand A: A predictive model for amyotrophic lateral sclerosis (ALS) diagnosis. *J Neurol Sci* 2012, **312**:68–72.
16. Henkel JS, Engelhardt JI, Siklós L, Simpson EP, Kim SH, Pan T, Goodman JC, Siddique T, Beers DR, Appel SH: Presence of dendritic cells, MCP-1, and activated microglia/macrophages in amyotrophic lateral sclerosis spinal cord tissue. *Ann Neurol* 2004, **55**:221–235.
17. Simpson EP, Henry YK, Henkel JS, Smith RG, Appel SH: Increased lipid peroxidation in sera of ALS patients: a potential biomarker of disease burden. *Neurology* 2004, **62**:1758–1765.
18. Wilms H, Sievers J, Dengler R, Bufler J, Deuschl G, Lucius R: Intrathecal synthesis of monocyte chemoattractant protein-1 (MCP-1) in amyotrophic lateral sclerosis: further evidence for microglial activation in neurodegeneration. *J Neuroimmunol* 2003, **144**:139–142.
19. Beers DR, Zhao W, Liao B, Kano O, Wang J, Huang A, Appel SH, Henkel JS: Neuroinflammation modulates distinct regional and temporal clinical responses in ALS mice. *Brain Behav Immun* 2011, **25**:1025–1035.
20. Henkel JS, Beers DR, Siklós L, Appel SH: The chemokine MCP-1 and the dendritic and myeloid cells it attracts are increased in the mSOD1 mouse model of ALS. *Mol Cell Neurosci* 2006, **31**:427–437.
21. Mantovani S, Garbelli S, Pasini A, Alimonti D, Perotti C, Melazzini M, et al: Immune system alterations in sporadic amyotrophic lateral sclerosis patients suggest an ongoing neuroinflammatory process. *J Neuroimmunol* 2009, **210**:73–79.
22. Zhang R, Gascon R, Miller RG, Gelinas DF, Mass J, Lancero M, Narvaez A, McGrath MS: MCP-1 chemokine receptor CCR2 is decreased on circulating monocytes in sporadic amyotrophic lateral sclerosis (sALS). *J Neuroimmunol* 2006, **179**:87–93.
23. Dawson J, Miltz W, Mir AK, Wiessner C: Targeting monocyte chemoattractant protein-1 signalling in disease. *Expert Opin Ther Targets* 2003, **7**:35–48.
24. Roebuck KA, Carpenter LR, Lakshminarayanan V, Page SM, Moy JN, Thomas LL: Stimulus-specific regulation of chemokine expression involves differential activation of the redox-responsive transcription factors AP-1 and NF- $\kappa$ B. *J Leukoc Biol* 1999, **65**:291–298.
25. Allavena P, Bianchi G, Zhou D, van Damme J, Jilek P, Sozzani S, Mantovani A: Induction of natural killer cell migration by monocyte chemoattractant protein-1, -2 and -3. *Eur J Immunol* 1994, **24**:3233–3236.
26. Amantea D, Nappi G, Bernardi G, Bagetta G, Corasaniti MT: Post-ischemic brain damage: pathophysiology and role of inflammatory mediators. *FEBS J* 2009, **276**:13–26.
27. Hinojosa AE, Garcia-Bueno B, Leza JC, Madrigal JL: CCL2/MCP-1 modulation of microglial activation and proliferation. *J Neuroinflammation* 2011, **8**:77.
28. Lee EO, Park HJ, Kang JL, Kim HS, Chong YH: Resveratrol reduces glutamate-mediated monocyte chemoattractant protein-1 expression via inhibition of extracellular signal-regulated kinase 1/2 pathway in rat hippocampal slice cultures. *J Neurochem* 2010, **112**:1477–1487.
29. Mahad D, Callahan MK, Williams KA, Ubogu EE, Kivisakk P, Tucky B, et al: Modulating CCR2 and CCL2 at the blood-brain barrier: relevance for multiple sclerosis pathogenesis. *Brain* 2006, **129**:212–223.
30. Semple BD, Bye N, Rancan M, Ziebell JM, Morganti-Kossmann MC: Role of CCL2 (MCP-1) in traumatic brain injury (TBI): evidence from severe TBI patients and CCL2-/- mice. *J Cereb Blood Flow Metab* 2010, **30**:769–782.
31. Tanabe S, Heesen M, Berman MA, Fischer MB, Yoshizawa I, Luo Y, Dorf ME: Murine astrocytes express a functional chemokine receptor. *J Neurosci* 1997, **17**:6522–6528.
32. Kuhle J, Lindberg RL, Regeniter A, Mehling M, Steck AJ, Kappos L, Czaplinski A: Increased levels of inflammatory chemokines in amyotrophic lateral sclerosis. *Eur J Neurol* 2009, **16**:771–774.
33. Philips T, Robberecht W: Neuroinflammation in amyotrophic lateral sclerosis: role of glial activation in motor neuron disease. *Lancet Neurol* 2011, **10**:253–263.
34. Tateishi T, Yamasaki R, Tanaka M, Matsushita T, Kikuchi H, Isobe N, Ohayagi Y, Kira J: CSF chemokine alterations related to the clinical course of amyotrophic lateral sclerosis. *J uroimmunol* 2010, **222**:76–81.
35. Coughlan CM, McManus CM, Sharron M, Gao Z, Murphy D, Jaffer S, et al: Expression of multiple functional chemokine receptors and monocyte chemoattractant protein-1 in human neurons. *Neuroscience* 2000, **97**:591–600.
36. Meng SZ, Oka A, Takashima S: Developmental expression of monocyte chemoattractant protein-1 in the human cerebellum and brainstem. *Brain Dev* 1999, **21**:30–35.
37. Butovsky O, Siddiqui S, Gabriely G, Lanser AJ, Dake B, Murugaiyanf G, et al: Modulating inflammatory monocytes with a unique microRNA gene signature ameliorates murine ALS. *J Clin Invest* 2012, **122**:3063–3087.
38. Sargsyan SA, Blackburn DJ, Barber SC, Monk PN, Shaw PJ: Mutant SOD1 G93A microglia have an inflammatory phenotype and elevated production of MCP-1. *NeuroReport* 2009, **20**:1450–1455.
39. Semple BD, Kossmann T, Morganti-Kossmann MC: Role of chemokines in CNS health and pathology: a focus on the CCL2/CCR2 and CXCL8/CXCR2 networks. *J Cereb Blood Flow Metab* 2010, **30**:459–473.
40. Croitoru-Lamourey J, Guillemin GJ, Boussin FD, Moggetti B, Gigout LI, Chéret A, Vaslin B, Le Grand R, Brew BJ, Dormont D: Expression of chemokines and their receptors in human and simian astrocytes: evidence for a central role of TNF $\alpha$  and IFN $\gamma$  in CXCR4 and CCR5 modulation. *Glia* 2003, **41**:354–370.
41. Hickman SE, El Khoury J: Mechanisms of mononuclear phagocyte recruitment in Alzheimer's disease. *CNS Neurol Disord Drug Targets* 2010, **9**:168–173.
42. Tanuma N, Sakuma H, Sasaki A, Matsumoto Y: Chemokine expression by astrocytes plays a role in microglia/macrophage activation and subsequent neurodegeneration in secondary progressive multiple sclerosis. *Acta Neuropathol* 2006, **112**:195–204.
43. Jee Y, Yoon WK, Okura Y, Tanuma N, Matsumoto Y: Upregulation of monocyte chemoattractant protein-1 and CC chemokine receptor 2 in the central nervous system is closely associated with relapse of autoimmune encephalomyelitis in Lewis rats. *J Neuroimmunol* 2002, **128**:49–57.
44. Quinones MP, Kalkonde Y, Estrada CA, Jimenez F, Ramirez R, Mahimainathan L, et al: Role of astrocytes and chemokine systems in acute TNF $\alpha$  induced demyelinating syndrome: CCR2-dependent signals promote astrocyte activation and survival via NF- $\kappa$ B and Akt. *Mol Cell Neurosci* 2008, **37**:96–109.
45. Andjelkovic AV, Song L, Dzenko KA, Cong H, Pachter JS: Functional expression of CCR2 by human fetal astrocytes. *J Neurosci Res* 2002, **70**:219–231.
46. Sofroniew MV, Vinters HV: Astrocytes: biology and pathology. *Acta Neuropathol* 2010, **119**:7–35.
47. Xia MQ, Hyman BT: Chemokines/chemokine receptors in the central nervous system and Alzheimer's disease. *J Neurovirol* 1999, **5**:32–41.
48. Rappold PM, Tieu K: Astrocytes and therapeutics for Parkinson's disease. *Neurotherapeutics* 2010, **7**:413–423.
49. Ferraiuolo L, Higginbottom A, Heath PR, Barber S, Greenald D, Kirby J, Shaw PJ: Dysregulation of astrocyte-motoneuron cross-talk in mutant superoxide dismutase 1-related amyotrophic lateral sclerosis. *Brain* 2011, **134**:2627–2641.
50. Papadeas ST, Kraig SE, O'Banion C, Lepore AC, Maragakis NJ: Astrocytes carrying the superoxide dismutase 1 (SOD1G93A) mutation induce wild-type motor neuron degeneration in vivo. *Proc Natl Acad Sci USA* 2011, **108**:17803–17808.
51. van Der Voorn P, Tekstra J, Beelen RH, Tensen CP, Van Der Valk P, De Groot CJ: Expression of MCP-1 by reactive astrocytes in demyelinating multiple sclerosis lesions. *Am J Pathol* 1999, **154**:45–51.
52. Takano T, Oberheim N, Cotrina ML, Nedergaard M: Astrocytes and ischemic injury. *Stroke* 2009, **40**:S8–12.

53. Yamanaka K, Chun SJ, Boillee S, Fujimori-Tonou N, Yamashita H, Gutmann DH, Takahashi R, Misawa H, Cleveland DW: **Astrocytes as determinants of disease progression in inherited amyotrophic lateral sclerosis.** *Nat Neurosci* 2008, **11**:251–253.
54. Jayapal KP, Philp RJ, Kok YJ, Yap MG, Sherman DH, Griffin TJ, Hu WS: **Uncovering genes with divergent mRNA-protein dynamics in *Streptomyces coelicolor*.** *PLoS One* 2008, **3**:e2097.
55. Kabashi E, Durham HD: **Failure of protein quality control in amyotrophic lateral sclerosis.** *Biochim Biophys Acta* 2006, **1762**:1038–1050.
56. Sica A, Saccani A, Borsatti A, Power CA, Wells TN, Luini W, Polentarutti N, Sozzani S, Mantovani A: **Bacterial lipopolysaccharide rapidly inhibits expression of C-C chemokine receptors in human monocytes.** *J Exp Med* 1997, **185**:969–974.
57. Saccani A, Saccani S, Orlando S, Sironi M, Bernasconi S, Ghezzi P, Mantovani A, Sica A: **Redox regulation of chemokine receptor expression.** *Proc Natl Acad Sci USA* 2000, **97**:2761–2766.
58. Limoli CL, Giedzinski E, Baure J, Rola R, Fike JR: **Redox changes induced in hippocampal precursor cells by heavy ion irradiation.** *Radiat Environ Biophys* 2007, **46**:167–172.
59. Díaz-Amarilla P, Olivera-Bravo S, Trias E, Cragnolini A, Martínez-Palma L, Cassina P, Beckman J, Barbeito L: **Phenotypically aberrant astrocytes that promote motoneuron damage in a model of inherited amyotrophic lateral sclerosis.** *Proc Natl Acad Sci USA* 2011, **108**:18126–18131.
60. Gurney ME: **Transgenic-mouse model of amyotrophic lateral sclerosis.** *N Engl J Med* 1994, **331**:1721–1722.
61. Sapan CV, Lundblad RL, Price NC: **Colorimetric protein assay techniques.** *Biotechnol Appl Biochem* 1999, **29**:99–108.
62. Kawaguchi M, Shibata N, Horiuchi S, Kobayashi M: **Glyoxal inactivates glutamate transporter-1 in cultured rat astrocytes.** *Neuropathology* 2005, **25**:27–36.

doi:10.1186/2051-5960-1-21

**Cite this article as:** Kawaguchi-Niida *et al.*: MCP-1/CCR2 signaling-mediated astrocytosis is accelerated in a transgenic mouse model of SOD1-mutated familial ALS. *Acta Neuropathologica Communications* 2013 **1**:21.

**Submit your next manuscript to BioMed Central and take full advantage of:**

- Convenient online submission
- Thorough peer review
- No space constraints or color figure charges
- Immediate publication on acceptance
- Inclusion in PubMed, CAS, Scopus and Google Scholar
- Research which is freely available for redistribution

Submit your manuscript at  
www.biomedcentral.com/submit

